



## TERMISHINE GARAGE FLOOR FINISHES



Termishine proudly introduces a range of boutique garage floor finishes and sealers for residential and commercial premises.

Garage floors need to stand up to everyday demands and our epoxy floor coating systems have been developed for durability and stain resistance. The non-slip texture creates a safe workspace and allows your garage to become a dual-purpose space. The epoxy finish is low maintenance, easy-to-clean and will last for many years to come.

At Termishine we only use first class quality products from Australia and the USA to deliver the highest standard of workmanship to ensure a stunning and unique result.



## WHAT IS EPOXY FLOORING?

Epoxy flooring is an extremely functional and resilient option for residential, industrial and commercial applications.

In simple terms, it is a resinous liquid poured and rolled onto a concrete floor. It sets extremely hard creating a highly durable and attractive floor surface.

Our Termishine Garage Floor range includes a variety of options, with your choice of a matt, satin or high gloss finish. This allows you to create an individual and unique look for your floor.

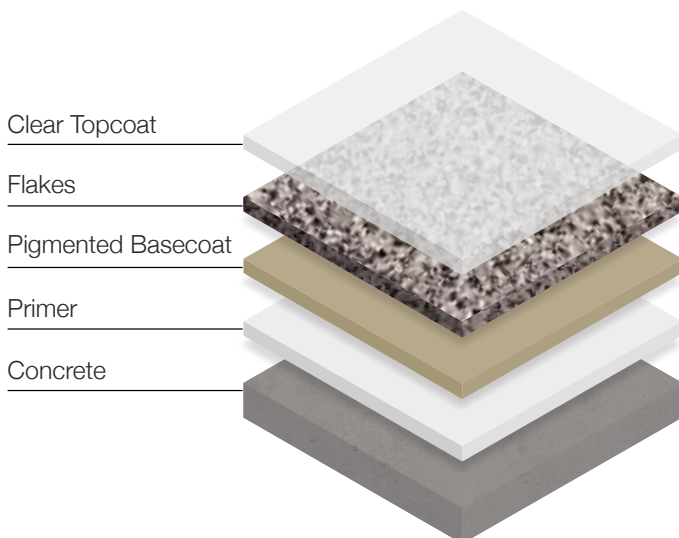
Why not emulate the look of terrazzo at a fraction of the price with our flake range? Or you could opt for one of our solid colours or even simply use a clear epoxy to enhance the natural look of the concrete surface.

## HOW IS IT APPLIED?

Surface preparation is key to the longevity of an epoxy floor. Our process involves expertly grinding and etching the base concrete substrate to create a bonding surface for the epoxy coating to adhere.

We then apply a primer to the substrate. Following this comes the coloured base coat, and the scattering of the flake chips, if you have selected this finish. And finally, we finish with a clear topcoat.

At each stage we expertly apply the epoxy to ensure a smooth and continuous surface.



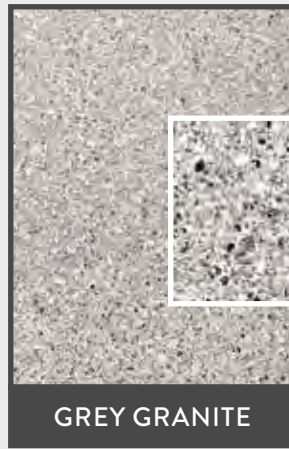
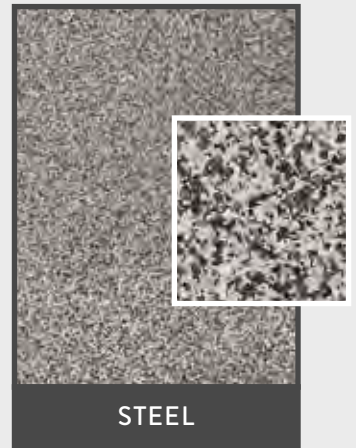
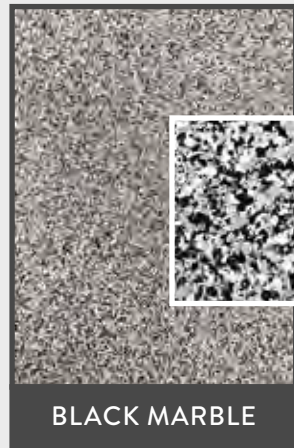
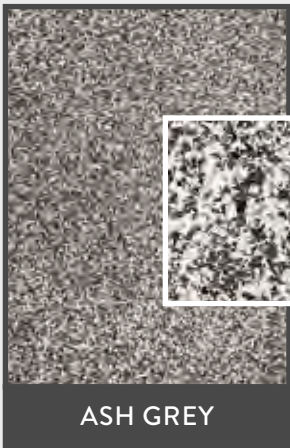


## JUST A FEW OF THE STEPS WE TAKE:

- We conduct a professional slab assessment which includes moisture testing and identifying required repairs
- Our product is carefully warehoused and transported to ensure its integrity
- Our trained tradesmen are correctly equipped and work closely with you keeping you informed on the progress
- Dust is the number one enemy of any coating system - we keep the area in optimal condition
- Final handover inspection completed to ensure your satisfaction
- We provide all clients with product and maintenance information upon completion of installation.

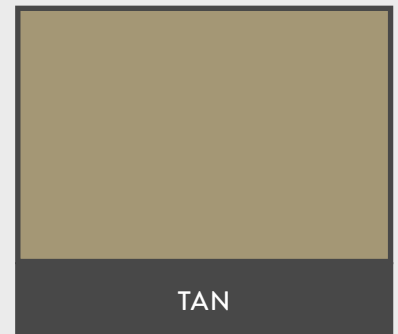
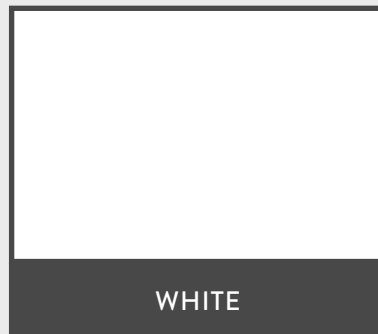
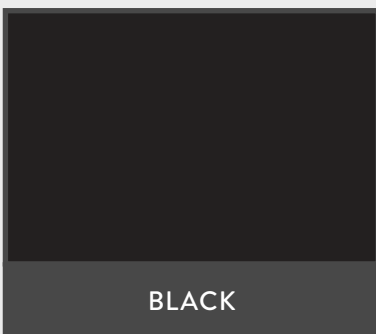
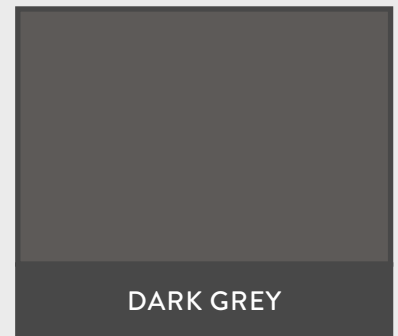


## FLAKE FINISH



\*For more finishes please speak to your Termishine representative or visit our website.

## SOLID FINISH



\*Colours are for illustration purposes only. Final finish may vary.



## FEATURES & BENEFITS

- Thick solid flake flooring with long lasting strength and durability
- High impact resistance
- Strong chemical, UV and scratch resistance
- Slip resistant with varying levels of texture to suit any design or surroundings
- Anti-microbial and hygienic
- Low maintenance and easy to clean
- Delivers aesthetic improvements to your home, reinvigorating your floors
- Available in a range of colours with high gloss, satin or matt finishes
- Is popular with architects, designers and builders
- Suitable for low to high foot and vehicle traffic
- Can be installed over old or new concrete and even tiles



## WHERE CAN I USE TERMISHINE?

Termishine is not limited to garage floors and can be used in a wide range of applications, both commercial and residential.

It is suitable for anywhere you need a durable and affordable flooring option that is highly resistant to stains and extremely easy to clean. We have installed our epoxy floor finishes in:

- Internal living areas
- Patios and entertaining areas
- Car parks
- Offices and showrooms
- Retail outlets
- Industrial complexes and warehouses

Our hardwearing epoxy surfaces will immediately enhance the look of your home or business, while delivering protection from oils, stains, water and other spills.

As well as our flake and solid range can also offer an exciting variety of decorative finishes, such as metallics, polished concrete as well as sealers for exposed aggregate and pavers.







## WHY CHOOSE TERMISHINE

Our exceptionally high standards will deliver a great looking floor that you will be proud of for years to come.

There is no substitute for experience when installing an epoxy floor. Termishine follows meticulous procedures during all stages of the process from the on-site assessment before quoting, through to a final handover inspection with our clients.

Visit our website for more information and to find your local Termishine Service Centre.

